

## DOOR LATCH COVERS

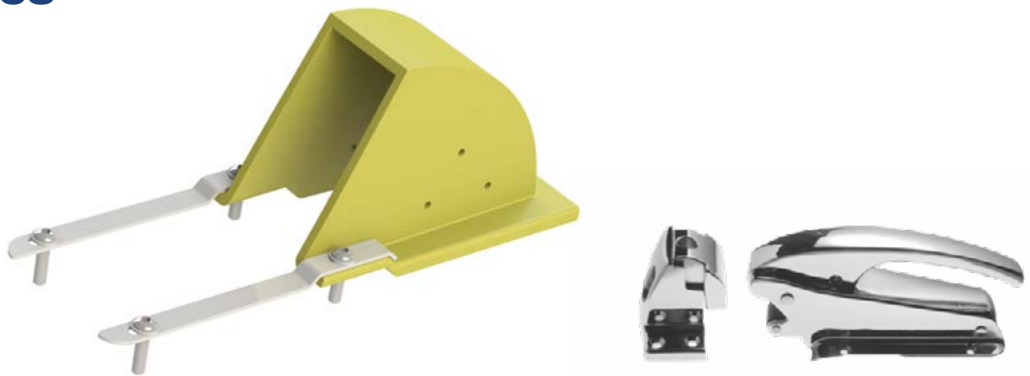
National Plastics & Rubber Door Latch Covers provide operators protection against injury to their fingers and hands when operating machine door handles.

- » **FLEXIBLE POLYURETHANE CONSTRUCTION**
- » **PROTECTS HANDS & FINGERS**
- » **ALL NECESSARY COMPONENTS SUPPLIED**



### TO SUIT AH-838

PART NO. NPR1715



### TO SUIT CT-1178

PART NO. NPR2251

