

# DRILL PRODUCTS

Leaders in the design and manufacture of Polyurethane,  
Rubber and Industrial Plastic Products.

# DRILL ROD SEAL ASSEMBLY

NPR's Drill Product range suits a variety of models including Atlas Copco PV235 and Drilltech Pit Vipers DK25, DK45, DK90 and SKF.

Our drill rod seals reduce machine downtime and running cost

Manufactured from flexible, tough rubber compound to provide an excellent sealing solution



## MADE TO FIT A NUMBER OF DIFFERENT DRILL SIZES:

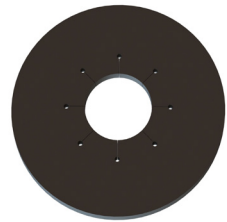
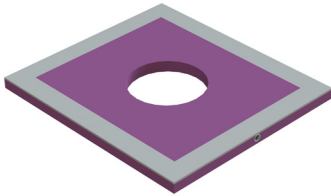
Part no.	To suit Atlas Copco PV235
NPR02340-00	Drill Rod Seal and Cone Housing
NPR02261-00	Drill Rod Seal 610mm L x 610mm W x 30mm T with Ø165mm center hole and finger cuts
NPR02263-00	Chip Deflector Cone 610mm L x 610mm W x 18mm T Ø460mm - Ø210mm cone x 200mm H

\* These parts are designed for various drill machines as aftermarket parts.  
We recommend confirming dimensions prior to ordering

# DRILL ROD SEALS

Designed to suit : DK25, DK45, DK90, SKF, SKSS & SKS PIT VIPERS\*  
Seals for other machines available on request

Part no.	Dimensions	Centre Hole Ø
NPR01304-00	610 L x 610 W x 30 T	185mm
NPR01305-00	610 L x 610 W x 30 T	165mm
NPR01306-00	610 L x 610 W x 30 T	90mm
NPR01488-00	550 L x 490 W x 30 T	185mm
NPR01534-00	400 L x 375 W x 30 T	185mm
NPR01572-00	400 L x 375 W x 30 T	130mm
NPR01612-00	550 L x 490 W x 30 T	130mm
NPR01618-00	550 L x 490 W x 30 T	152mm
NPR01631-00	400 L x 375 W x 30 T	150mm
NPR06943-00	510 L x 410 W x 25 T	174mm

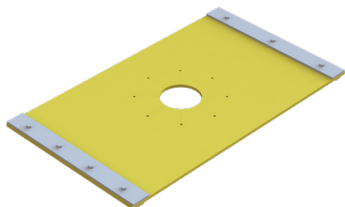


Part no.	Dimensions	Centre Hole Ø
NPR00335-00	Ø660 x 20 T	203mm
NPR01339-00	Ø667 x 48 T	185mm
NPR01819-00	Ø354 x 12 T	171mm
NPR01965-00	Ø570 x 20 T	215mm

\* These parts are designed for various drill machines as aftermarket parts.  
We recommend confirming dimensions prior to ordering

# CHIP DEFLECTOR - PANEL

Designed to suit: DK25, DK45, DK90, SKF & SKSS PIT VIPERS\*

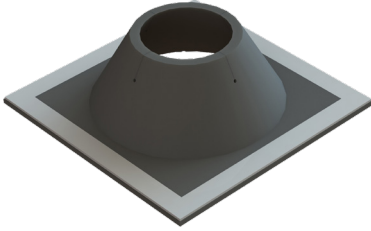


Part no.	Product Information	Dimensions (mm)
NPR02131-00	Outside Chip Deflector Assembly	1000 L x 900 W x 18 T
NPR02132-00	Chip Deflector	1150 L x 500 W x 15 T
NPR02161-00	Outside Chip Deflector	1000 L x 900 W x 25 T
NPR02162-00	Inside Chip Deflector	1000 L x 750 W x 25 T
NPR02209-00	Chip Deflector	1380 L x 800 W x 16 T
NPR02230-00	Chip Deflector Panel	1000 L x 790 W x 25 T
NPR02231-00	Chip Deflector Panel - Outside	1000 L x 790 W x 25 T
NPR02233-00	Chip Deflector Panel - Inside	1090 L x 1000 W x 25 T
NPR02252-00	Chip Deflector Assembly	1000 L x 675 W x 18 T
NPR02253-00	Chip Deflector Assembly	1175 L x 800 W x 18 T
NPR02254-00	Chip Deflector Assembly	1000 L x 900 W x 18 T
NPR02286-00	Chip Deflector	1380 L x 800 W x 20 T
NPR01707-00	Drill Chip Deflector/Nappy	1800 L x 1000 W x 20 T
NPR02084-00	Chip Deflector Assembly - Outside	1000 L x 790 W x 18 T
NPR02086-00	Chip Deflector Assembly - Inside	1090 L x 1000 W x 18 T

\* These parts are designed for various drill machines as aftermarket parts.  
We recommend confirming dimensions prior to ordering

# CHIP DEFLECTOR - CONE

Designed to suit: DK25, DK45, DK90, SKF & SKSS PIT VIPERS\*



Part no.	Product Information	Dimensions (mm)
NPR02263-00	Chip Deflector Cone	610mm x 610mm flange Ø460mm - Ø210mm cone x 200mm H
NPR02074-00	Chip Deflector Cone	Ø587 flange x 12mm thick Ø495 at top Ø170 at bottom x 246mm H
NPR02338-00	Drill Rod Cone	Ø610 flange Ø510 - Ø210mm cone x 200mm H

\* These parts are designed for various drill machines as aftermarket parts.  
We recommend confirming dimensions prior to ordering

# DRILL FOOT FLOOR PROTECTION

Keep your drill foot protected with NPR's Drill Foot Floor Protection Mats

- » Hollow, circular design to allow the bolts to sit without hitting the workshop floor
- » Safe and supportive
- » Strong load rated polyurethane
- » Handles for easy application
- » Lightweight



Part no.	Dimensions (mm)
NPR06763-00	950 x 800 x 125
NPR06415-00	760 x 660 x 100
NPR06669-00	905 x 835 x 100
NPR06670-00	920 x 840 x 100
NPR06671-00	610 x 530 x 100
NPR06672-00	760 x 710 x 100

\* These parts are designed for various drill machines as aftermarket parts.  
We recommend confirming dimensions prior to ordering

# I.D. NUMBERS

Machine identification number boxes easily attach to machine rooftops and use reflective digits for optimum visibility

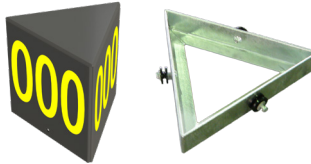
- » Easy to attach
- » Reflective digits for optimum visibility



## TRIANGULAR BOX & FRAME ASSEMBLY

PART NO. NPR01667-00

Complete with isolation bushes and fasteners.



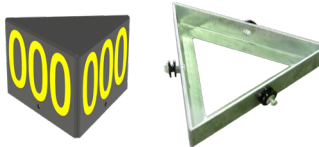
500mm W

500mm H

## TRIANGULAR BOX & FRAME ASSEMBLY

PART NO. NPR01604-00

Complete with isolation bushes and fasteners.



500mm W

325mm H

## TRIANGULAR BOX

PART NO. NPR01677-00

Rooftop Box only.



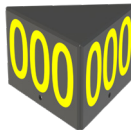
500mm W

500mm H

## TRIANGULAR BOX

PART NO. NPR01606-00

Rooftop Box only.



500mm W

325mm H

\* These parts are designed for various drill machines as aftermarket parts.  
We recommend confirming dimensions prior to ordering



# ROOFTOP I.D. NUMBERS

Machine identification number boxes easily attach to machine rooftops and use reflective digits for optimum visibility

- » Easy to attach
- » Reflective digits for optimum visibility



## TRIANGULAR BOX & FRAME ASSEMBLY

PART NO. NPR06120-00  
Complete with magnets



500mm W

325mm H

## TRIANGULAR BOX & FRAME ASSEMBLY

PART NO. NPR06629-00  
Complete with magnets



500mm W

500mm H

View from top



View from base



\* These parts are designed for various drill machines as aftermarket parts.  
We recommend confirming dimensions prior to ordering





# WE CREATE SOLUTIONS

## CAN'T FIND WHAT YOU NEED?

From design to manufacturing, National Plastics & Rubber offer custom made products to meet your individual needs. Our quality polyurethane, rubber and industrial plastic products can be used as a solution to many of your workplace requirements from floor protection to heavy machinery replacement parts.



# NATIONAL PLASTICS & RUBBER

**NATIONALPLASTICS.NET.AU**

**Email** [info@nationalplastics.net.au](mailto:info@nationalplastics.net.au)

**Phone** +617 3279 3066

National Plastics & Rubber have been manufacturing and supplying quality Polyurethane, Industrial Plastics and Rubber products to Australian and International Heavy Industries since 1997.

Using industry knowledge and quality materials, you can rely on National Plastics & Rubber to provide products that offer the best in safety, durability and efficiency.

National Plastics & Rubber promotes safe working practices therefore, performing your own risk assessment is essential before using these products

All dimensions are indicative and may vary slightly from part to part.