

WORKSHOP CHOCK

IMPROVE YOUR WORKSHOP SAFETY

We have expanded our trusted wheel chock range to include a **NEW** ergonomically designed workshop wheel chock. Complimenting our range of quality tested mining products, this chock is purpose designed for the workshop environment.

- » **REDUCES RISK OF BACK STRAIN CAUSED BY REPEAT BENDING**
- » **EASIER TO ENSURE CORRECT POSITIONING**
- » **ELIMINATE THE NEED TO GO UNDER THE FOOTPRINT OF THE TRUCK**
- » **IDEAL FOR TYPICAL WORKSHOP ENVIRONMENTS AND LOW GRADIENTS**



AWARD-WINNING PRODUCT

Innovation & People's Choice Award
QLD Mining Health & Safety Conference 2022

WORKSHOP WHEEL CHOCK

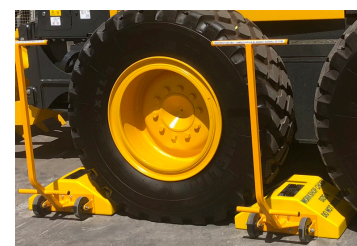
PART NO. NPR07999-00



SIZE 4 WORKSHOP WHEEL CHOCK

PART NO. NPR08304-00

Designed to suit equipment with smaller tyre widths (Graders and small trucks)w



WORKSHOP CHOCK

USER GUIDE

National Plastics & Rubber promotes safe working practices therefore, performing your own risk assessment is essential before using these products.



To move into position, use the foot bar to help pull the handle down, levering the chock onto its back wheels.

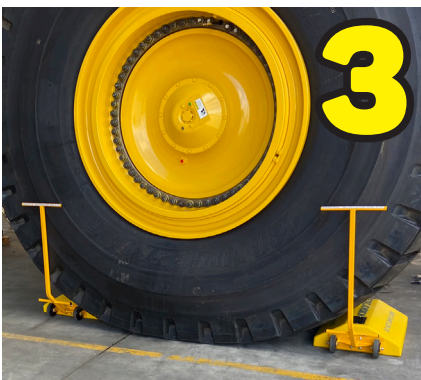
Push chock as close to the truck wheel as possible.



Lift the chock onto its front wheel and bring close to the tyre. Bring the back of the chock around into position.

The chock should be straight and flush against the bottom of the tyre.

Ensure both sides of the wheel are chocked.



When chocks on both sides of the wheel are in position correctly, the truck is secured.

To remove the chock, lift onto front wheel, remove from flush position & when clear of the tyre, transition onto the back wheels and move into selected location.