

## GUIDE TO USE LIGHTWEIGHT RIM CLEATS

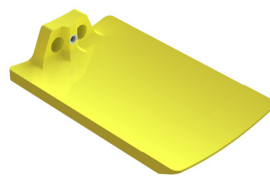
Disclaimer: Guide only - National Plastics & Rubber promotes safe working practices therefore, performing your own risk assessment and following all site specific safety procedures is essential.

1. Make sure truck is stationary and secure
2. Secure the rim to the truck with 3 evenly spaced lightweight cleats (12, 3, and 9 o'clock) and a steel cleat at 6 o'clock
3. Tension the remaining nuts to the specified torque - engraved on the face of the lightweight cleat

4. Remove the tyre handler

5. Two tyre fitters should work together to fit steel cleats to approximately 5 and 7 o'clock on the tyre

Lightweight cleats weigh approx **6kg!**



**Steel cleats are heavy and unsafe to lift over head**



Steel cleats can weigh **27.9kg!**

6. Ensure the whole axle is jacked up - start the truck and rotate the rims
7. Progressively install more steel cleats as the tyre is rotated - remove the lightweight cleats and replace with steel
8. Ensure *ALL* lightweight cleats are removed before moving vehicle

**Suits EH range of Hitachi trucks**

Contact NPR for more details and part no's.