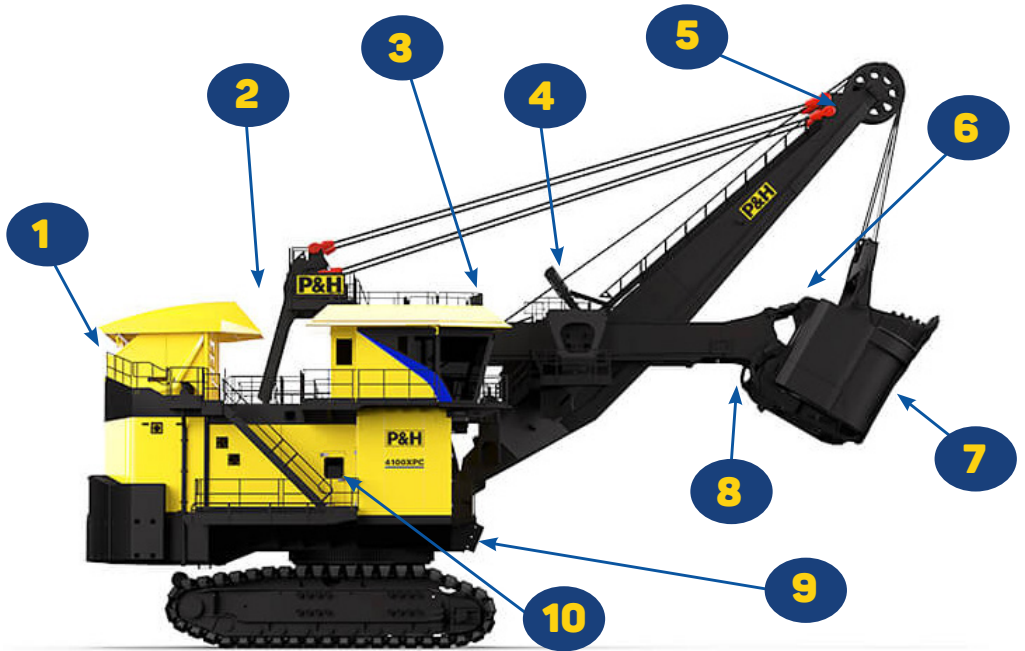


SHOVEL INSPECTION SERVICE



National Plastics & Rubber is proud to offer a mining shovel inspection service.

HOW DOES IT WORK?

As each shovel is different, our knowledgeable team will inspect a shovel on site and provide a detailed report based on that shovel condition. Each report is uniquely tailored to that shovel, ensuring only relevant parts & products are recommended.

NPR has developed a range of products designed to increase the service life of each shovel, reduce machine downtime, and minimise WHS risks.

WHAT PRODUCTS DOES NPR OFFER?

We design and manufacture plastic, rubber and polyurethane products to suit every area of your shovel.

While our team will provide you with a complete guide to each individual shovel, if you would like more information on our range of shovel products contact us on:

07 3279 3066 | sales@nationalplastics.net.au

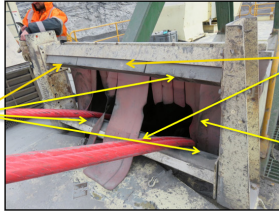
- 1 SPOTTING BELL**
- 2 MOTOR EXHAUST DUCTING**
- 3 HOUSE EXIT**
- 4 CROWD BOX**
- 5 SPOTTING MARKERS**
- 6 DOOR BUFFER BLOCK**
- 7 GENERAL BUCKET COMPONENTS**
- 8 DIPPER DOOR BLOCK**
- 9 BOOM BUFFER BLOCK**
- 10 TRIP ROLLER SYSTEM**

SHOVEL INSPECTION SERVICE

EXAMPLE SHOVEL INSPECTION REPORT

Provided below are example pages from a recent shovel report to demonstrate what you can expect from a National Plastics & Rubber mining shovel inspection.

House Exit Roller System



Item	Qty	Description	Dimensions	Part No
1	4	T-Slot - Wear Blocks	500mm long x 125mm x 125mm	NPR641

Crowd Box Roller System



NPR can measure and supply complete roller system with all spare parts to suit.

Item	Qty	Description	Dimensions	Part No
1	8	Bearingless Rollers	Ø200mm x 225mm long to suit a Ø70mm shaft	NPR738
2	4	Wear Pad	350mm x 228mm x 60mm	NPR992



Upgrade

This system upgrade is fitted to most new machines through P&H (supplied by NPR). It offers greater rope control and the system is designed to allow the roller shafts to swing out to make the replacing of worn rollers less labour intensive.

mm x 782mm Long	NPR993
-----------------	--------



Existing

Alternative



Made from high wearing impact resistant polyurethane with fluorescent strip which make this product highly visible.