



**NATIONAL**  
PLASTICS & RUBBER

# SHOVEL PRODUCTS

BRO-A-170 V1.0.0

Leaders in the design and manufacture of Polyurethane,  
Rubber and Industrial Plastic products.

# SHOVEL INSPECTION

National Plastics & Rubber is proud to offer a mining shovel inspection service.

## HOW DOES IT WORK?

As each shovel is different, our knowledgeable team will inspect a shovel on site and provide a detailed report based on that shovel condition. Each report is uniquely tailored to that shovel, ensuring only relevant parts & products are recommended.

NPR has developed a range of products designed to increase the service life of each shovel, reduce machine downtime, and minimise WHS risks.

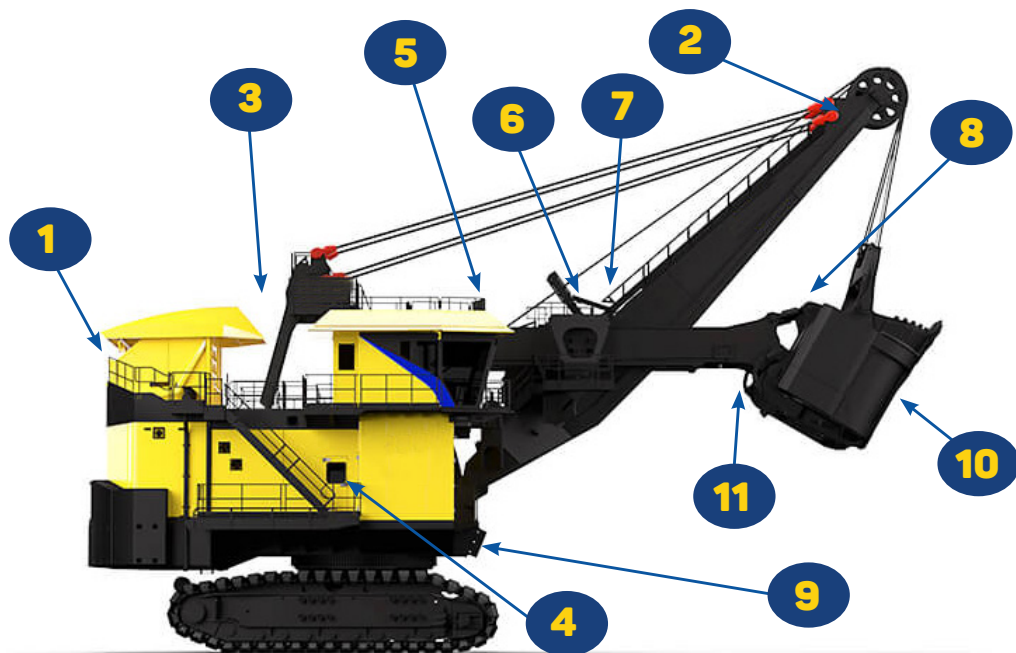
## WHAT PRODUCTS DOES NPR OFFER?

We design and manufacture plastic, rubber, steel and polyurethane products to suit every area of your shovel.

While our team will provide you with a complete guide to each individual shovel, if you would like more information on our range of shovel products contact us on:

07 3279 3066 | [sales@nationalplastics.net.au](mailto:sales@nationalplastics.net.au)





- |           |                                  |
|-----------|----------------------------------|
| <b>1</b>  | <b>SPOTTING BELL</b>             |
| <b>2</b>  | <b>SPOTTING MARKER</b>           |
| <b>3</b>  | <b>MOTOR EXHAUST DUCTING</b>     |
| <b>4</b>  | <b>INTERNAL HOUSE COMPONENTS</b> |
| <b>5</b>  | <b>HOUSE EXIT</b>                |
| <b>6</b>  | <b>CROWD BOX</b>                 |
| <b>7</b>  | <b>BOOM AREA</b>                 |
| <b>8</b>  | <b>DOOR BUFFER BLOCK</b>         |
| <b>9</b>  | <b>BOOM BUFFER BLOCK</b>         |
| <b>10</b> | <b>GENERAL BUCKET COMPONENTS</b> |
| <b>11</b> | <b>DIPPER DOOR BLOCK</b>         |

PAGE 1

PAGE 1

PAGE 1

PAGE 2

PAGE 3

PAGE 4

PAGE 5

PAGE 5

PAGE 6

PAGE 6

PAGE 7

# 1. SPOTTING BELL



## » Shovel spotting marker bell

Made from high wearing impact resistant polyurethane.

Featuring a fluorescent strip for maximum visibility in all conditions.

# 2. SPOTTING MARKER



## » Spotting markers

Made from high wearing impact resistant polyurethane.

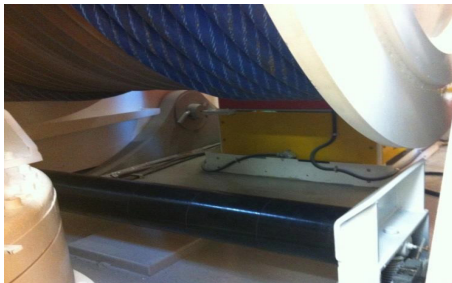
Featuring a fluorescent strip for maximum visibility in all conditions.

# 3. MOTOR EXHAUST DUCTING



## » Motor exhaust ducting

# 4. INTERNAL HOUSE COMPONENTS



- » Slack rope hoist drum trip roller system

Designed to take up excess rope that accumulates at the back of the hoist drum



- » Replacement lightweight plastic coupling covers

Replace existing steel units and reduce the possibility of strains and pulls



- » Hoist aperture - house

Consists of:

Bearingless rollers

Split thrust washer



# 5. HOUSE EXIT



## » House exit roller system

Consists of:

Bearingless rollers

Wear pads

House exit curtain

## UPGRADE - P&H

This hose exit roller system upgrade is fitted to most new machines through P&H - supplied by NPR. It offers greater rope control and the system is designed to allow roller shafts to swing out to make the replacing of worn rollers less labour intensive.

We can measure and supply a complete roller system with all spare parts to suit. Contact us for more information.



# 6. CROWD BOX



## » Crowd box roller system

Consists of:

Bearingless rollers

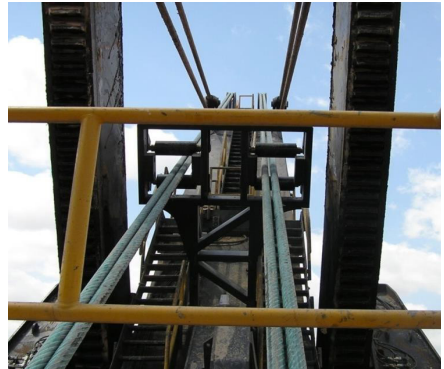
Wear pads

Shaft

## UPGRADE - P&H

This crowd box roller system upgrade is fitted to most new machines through P&H - supplied by NPR. It offers greater rope control and the system is designed to allow roller shafts to swing out to make the replacing of worn rollers less labour intensive.

We can measure and supply a complete roller system with all spare parts to suit. Contact us for more information.



## 7. BOOM AREA



### » Upper boom handrail

Consists of:

Bearingless rollers

Thrust washer

## 8. DOOR BUFFER BLOCK



### » Door buffer blocks

Bolt on or 'weld' on  
option available



### » Shovel bucket buffer pad

To suit ESCO bucket



## 9. BOOM BUFFER BLOCK

- » Boom buffer blocks

Available with retaining pin



## 10. GENERAL BUCKET COMPONENTS



- » Dutchmans handle

Consists of:

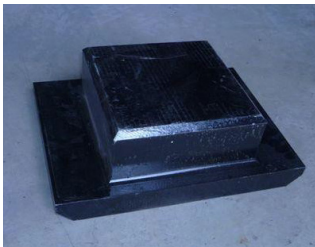
Level latch cushion

Wear slide



- » Level latch bumper

# 10. GENERAL BUCKET COMPONENTS

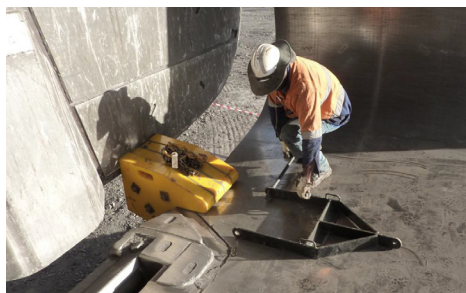


» Latch C-block and bump block

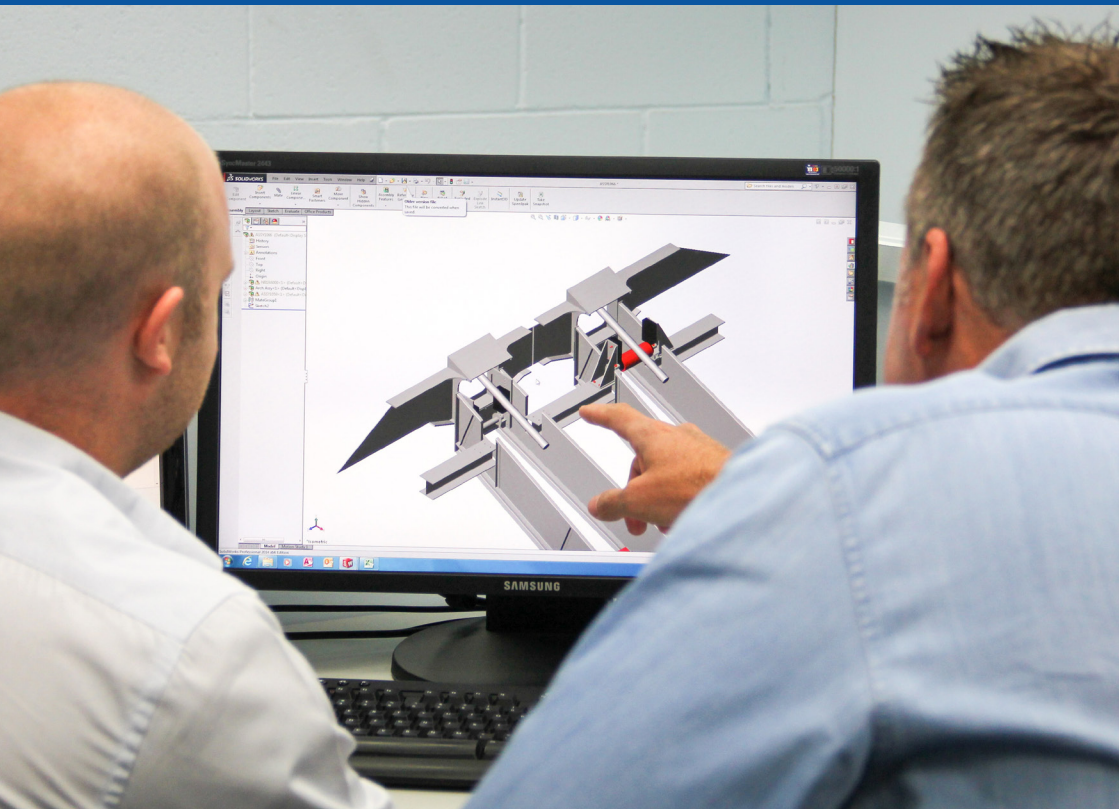
# 11. DIPPER DOOR BLOCK



» Dipper door stop block



» Shovel dipper door wedge



# WE CREATE SOLUTIONS

## CAN'T FIND WHAT YOU NEED?

From design to manufacturing, National Plastics & Rubber offer custom made products to meet your individual needs. Our quality polyurethane, rubber and industrial plastic products can be used as a solution to many of your workplace requirements from floor protection to heavy machinery replacement parts.

[NATIONALPLASTICS.NET.AU](http://NATIONALPLASTICS.NET.AU)

Email [info@nationalplastics.net.au](mailto:info@nationalplastics.net.au)

Phone +617 3279 3066



# NATIONAL PLASTICS & RUBBER

**NATIONALPLASTICS.NET.AU**

Email [info@nationalplastics.net.au](mailto:info@nationalplastics.net.au) Phone +617 3279 3066

National Plastics & Rubber has the experience and knowledge necessary to meet your needs.

National Plastics & Rubber promotes safe working practices therefore, performing your own risk assessment is essential before using these products.

We specialise in polyurethane, rubber and industrial plastics design and manufacturing for the mining, automotive and manufacturing industries.