

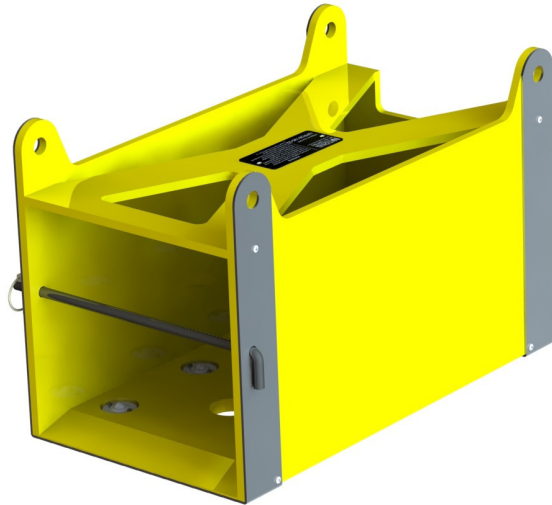
# BATTERY CRADLE

Reduce the risk of injury from a manual handling process and save time when moving batteries around onsite.

- » **SUITABLE FOR 60KG N200 BATTERY**
- » **ASSISTS IN MOVING BATTERIES ON SITE**
- » **REDUCE INJURY RISKS FROM MANUAL HANDLING**

## NPR08198-00

	570mm L
	315mm W
	370mm H
	11.14kg



- » **TESTED TO AS1170.0, AS1170.1 AND AS1554.6**
- » **WORKING LOAD LIMIT 6.5KPA OR 100KG, WHICHEVER IS LESS**
- » **FITTED WITH 4 STEEL LIFTING EYES**
- » **BALL TRANSFER UNITS ON THE BASE**
- » **LOCKING PIN ACROSS FRONT ENTRY**



# NATIONAL PLASTICS & RUBBER

**NATIONALPLASTICS.NET.AU**

**Email** [info@nationalplastics.net.au](mailto:info@nationalplastics.net.au) **Phone** +617 3279 3066

National Plastics & Rubber has the experience and knowledge necessary to meet your needs.

National Plastics & Rubber promotes safe working practices therefore, performing your own risk assessment is essential before using these products.

We specialise in polyurethane, rubber and industrial plastics design and manufacturing for the mining, automotive and manufacturing industries.