

NATIONAL
PLASTICS & RUBBER



WORKSHOP PRODUCTS

Leaders in the design and manufacture of Polyurethane,
Rubber and Industrial Plastic products.

QUALITY PRODUCTS, SUPERIOR PERFORMANCE.

National Plastics & Rubber have been manufacturing quality Polyurethane, Industrial Plastic and Rubber products for the global Mining and Construction Industries since 1997. We have since grown to include other sectors, such as transport and manufacturing.

We go out of our way to provide the highest level of service and quality our customers have come to expect. By consulting with our customers and understanding their needs we can develop the best products for their industries.

Wheel Chocks, Safety Products, Floor Protection and more, you can rely on National Plastics & Rubber to provide products that offer the best in safety, durability, and efficiency.

NATIONALPLASTICS.NET.AU





Email info@nationalplastics.net.au

Phone +617 3279 3066

CONTENTS

1	Load Rated Support Blocks	18	HoseMate™
1	Stacko™ Blocks	19	Trolleys
2	Timba™ Blocks	20	Truck Products
3	Workshop Support Products	20	Tray Support Blocks
3	Workshop V-Blocks	22	Lightweight Rim Cleats
4	Dozer Lift Pads	23	Louvered Vents
5	Dozer Ripper Frame Cover	24	Mattcaps
6	Floor Protection Products	25	Fuel Cap
6	Floor Protection Mats	26	Flexiflap™
7	Ripper Rest Pads	27	Body Pads
8	Blade Rest Pads	28	Machine Identification
9	Outrigger Pads	28	NevaFail™ LED I.D.
10	Products for the Workshop	30	Rooftop Machine I.D.
10	Workshop Chock	32	Hanging Machine I.D.
12	Dozer Maintenance Mats	33	Miscellaneous Products
13	Light Duty Cable & Hose Covers	33	Slip Resistant Step Nosing
14	Medium Duty Cable & Hose Covers	34	Door Latch Covers
15	Heavy Duty Cable & Hose Covers	35	Emergency Stop Covers
16	Track Guide Pad	36	Stud Protectors
17	Battery Cradle	37	Wheel Chocks

LEGEND

-  Dimensions
-  Weight
-  Load Rating
-  Suits Tyre Diameter

Suited Applications (But not limited to)



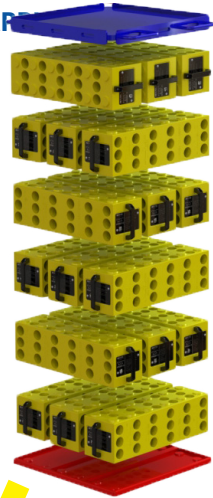
STACKO™ BLOCKS

DEVELOPED FROM THE GROUND UP.

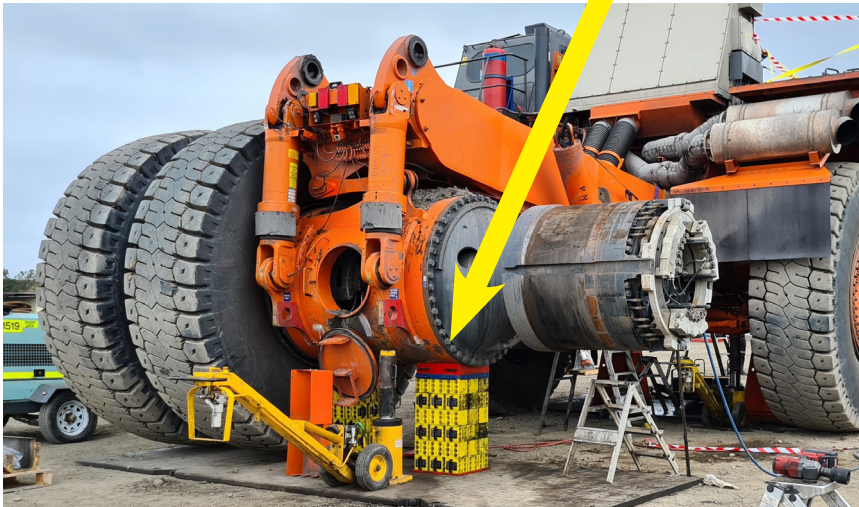
Manufactured from high quality UV stabilised materials, Stacko™ Blocks are the superior alternative to traditional timber blocks. Stacko™ will perform to expectations for the long term.

- » **LOAD RATED - TESTED TO 180T, CERTIFIED TO 60T**
- » **TESTED TO AS1170.0**
- » **UP TO 30% LIGHTER THAN TIMBER**
- » **INTERLOCKING DESIGN**
- » **MULTIPLE CONFIGURATIONS FOR**

VARIOUS APPLICATIONS



60 Tonne Capacity
3:1 Safety Factor



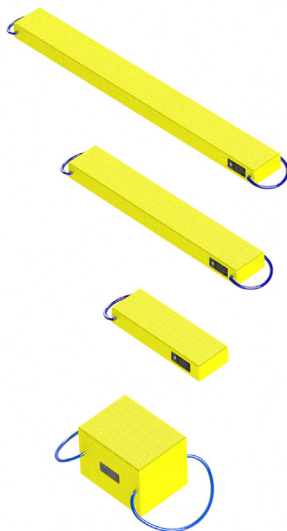
For more information see our Stacko™ Blocks Brochure
www.stacko.com.au

TIMBA™ BLOCKS

THE SUPERIOR ALTERNATIVE TO TIMBER BLOCKS.

Timba™ Blocks are a reusable, durable and superior alternative support blocks that can be used in all working conditions.

- » **LOAD RATED: 30KG PER CM²**
- » **TESTED TO AS1170.0 AND ASTM D1621-10**
- » **LIGHTWEIGHT DESIGN**
- » **MADE FROM DURABLE POLYURETHANE**
- » **DOES NOT SPLINTER OR WARP LIKE WOOD**



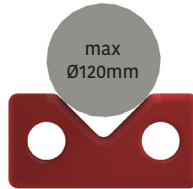
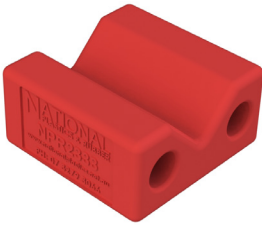
Product Code	Length	Width	Depth	Weight	Total Load Capacity
NPR02247-00	600mm (24")	100mm (4")	100mm (4")	3kgs	18 Ton
NPR02249-00	1200mm (48")	100mm (4")	100mm (4")	5kgs	36 Ton
NPR02248-00	1800mm (70")	100mm (4")	100mm (4")	8kgs	54 Ton
NPR02140-00	600mm (24")	200mm (8")	100mm (4")	5kgs	36 Ton
NPR02637-00	900mm (36")	200mm (8")	100mm (4")	7.5kgs	54 Ton
NPR02246-00	1200mm (48")	200mm (8")	100mm (4")	10kgs	72 Ton
NPR02142-00	1800mm (70")	200mm (8")	100mm (4")	15kgs	108 Ton
NPR02336-00	400mm (16")	300mm (12")	300mm (12")	13kgs	36 Ton

For more information see our Timba™ Blocks Brochure
www.timbablocks.com.au

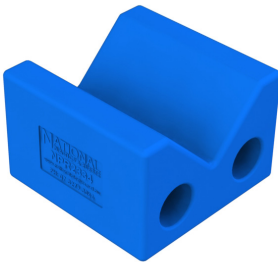
WORKSHOP V-BLOCK

Workshop V-Blocks are used to support cylinders and other round components in the workshop

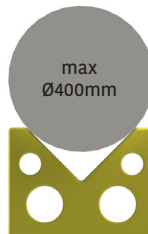
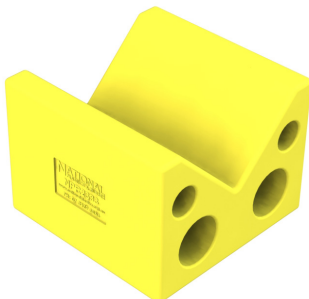
- » **SUPPORTS OBJECTS FROM ROLLING AND BEING DAMAGED**
- » **LIGHTWEIGHT AND EASILY MOVEABLE**
- » **MORE RELIABLE THAN TIMBER OR OLD PALLETS WHICH ARE TYPICALLY USED**



Small (Red)
suits max Ø120mm
PART NO. NPR02333-00



Medium (Blue)
suits max Ø250mm
PART NO. NPR02334-00



Large (Yellow)
suits max Ø400mm
PART NO. NPR02335-00

DOZER LIFT PADS

DOZER MAINTENANCE MADE EASY

- » Replace the need for hydraulic jacks and custom stands
- » Avoid big set ups and OHS risks
- » No need to be under a suspended load
- » Durable heavy duty polyurethane
- » 250kg - moveable with a forklift or attached chain



PART NO. NPR02096-00



ALLOWS EASY ACCESS TO:

- » ROLLER
- » EQUALISER BAR
- » BOGIE PAD
- » RIPPER ARM
- » TRACK

Drive the dozer forward until the front and rear of the tracks are off the ground

Leave the ripper and blade on the ground to balance the dozer

Once the dozer is in position, the tracks can be slackened to allow easy access to the rollers



DOZER RIPPER FRAME COVER

CREATE A SAFE WORK PLATFORM ON THE RIPPER ARM

Take the risk out of dozer maintenance with our load rated and lightweight Dozer Ripper Frame Cover.

Our cover sits over the hole in the ripper frame and allows workers to perform all maintenance tasks without the hazard of falling through the hole.



- » SAFELY REACH ANY OVERHEAD AREAS, HYDRAULICS, AND ENGINE SYSTEMS
- » REDUCE RISKS ASSOCIATED WITH PERFORMING MAINTENANCE NEAR HOLE IN RIPPER ARM
- » PATENTED HIGH TRACTION SURFACE* PROVIDES EXTRA GRIP ON TOP OF COVER

SUITS D10 & D11 DOZERS

INDEPENDENT & FIELD TESTED

LOAD RATED UP TO 120KG

LIGHTWEIGHT DESIGN - 14KG



*Aust. Pat. No. 2017228727

PART NO.: NPR08051-00

FLOOR PROTECTION MATS

Floor Protection Mats provide protection against the potential damage caused by heavy dozers and excavators on workshop floors.

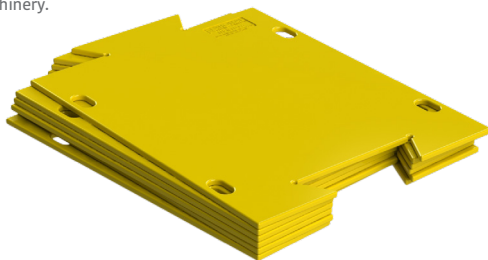
- » **MADE FROM DURABLE POLYURETHANE**
- » **SIMPLE TO USE & EASY TO STORE**



FLOOR PROTECTION MATS

PART NO. NPR01016-00

To be used under tracked machinery.



Load Capacity

 100kg/ cm²

 1000mm L

800mm W

18mm D

 18kg

FLOOR PROTECTION MAT TROLLEY

PART NO. NPR01492-00

Holds up to 12 Mats as pictured
Mats not included



 1110mm L

740mm W

823mm H

 31kg

RIPPER REST PADS

Protection to floor and machinery is made easy and effortless with the use of our lightweight and durable Ripper Rest Pads.

- » **PROTECT FLOOR & MACHINERY AGAINST WEAR & IMPACT**
- » **LIGHTWEIGHT DESIGN**
- » **PATENTED HIGH TRACTION SURFACE**



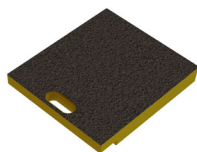
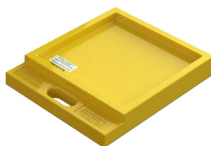
RIPPER PAD MEDIUM

PART NO. NPR00370-00

Recommended to be used with the ripper boot removed.

Load Capacity

 300kg/ cm²



 465mm L

400mm W

40mm D

 10.5kg

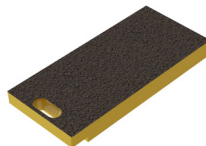
RIPPER PAD LARGE

PART NO. NPR01415-00

Can be used with large size rippers.

Load Capacity

 300kg/ cm²



 675mm L

300mm W

50mm D

 13kg

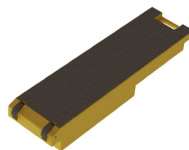
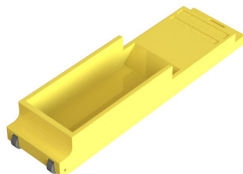
RIPPER PAD WITH WHEELS

PART NO. NPR05745-00

Designed with higher sides to prevent broken parts ejecting

Load Capacity

 300kg/ cm²



 970mm L

250mm W

175mm D

 21kg

BLADE REST PADS

Protection to floor and machinery is made easy and effortless with the use of our lightweight and durable Blade Rest Pads.

- » **PROTECT FLOOR & MACHINERY AGAINST WEAR & IMPACT**
- » **LIGHTWEIGHT DESIGN**
- » **PATENTED HIGH TRACTION SURFACE**



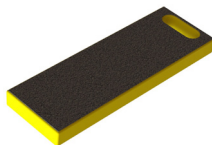
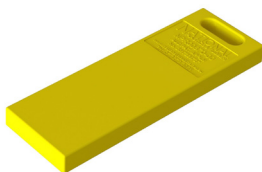
BLADE REST PAD NARROW

PART NO. NPR00870-00

To be used in sets between blade and floor.

Load Capacity

 300kg/ cm²



 600mm L

200mm W

50mm D

 7kg

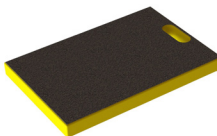
BLADE REST PAD WIDE

PART NO. NPR01416-00

To be used in sets between blade and floor.

Load Capacity

 300kg/ cm²



 600mm L

400mm W

50mm D

 14kg

OUTRIGGER PADS

Create a larger and more stable surface area for outrigger supports with our tough and durable Outrigger Pads.

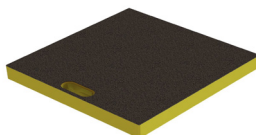
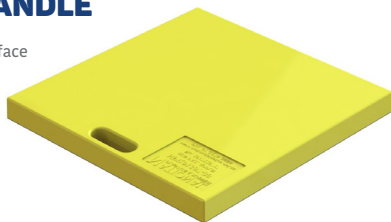
- » **BUILT TO WITHSTAND THE TOUGHEST CONDITIONS**
- » **WILL NOT SPLINTER OR ROT**
- » **RESISTANT TO OILS & MANY CHEMICALS**



OUTRIGGER PAD W/ MOULDED HANDLE

PART NO. NPR01397-00

with Patented High Traction Surface



Load Capacity

 300kg/ cm²

 600mm L

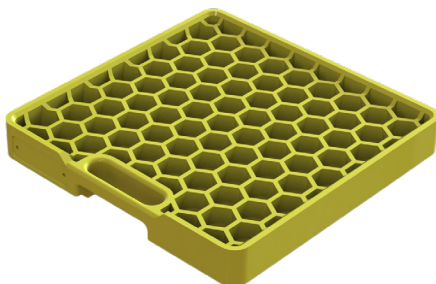
600mm W

50mm D


 24kg

OUTRIGGER PAD STACKABLE

PART NO. NPR02398-00



Load Capacity

 30kg/ cm²
minimum load area 200cm²

 490mm L

490mm W

83mm D

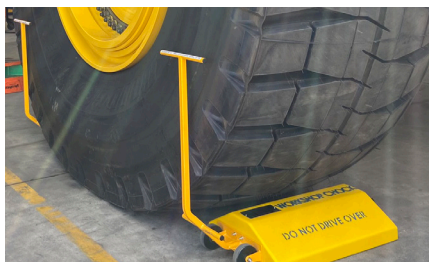
 12kg

WORKSHOP CHOCK

IMPROVE YOUR WORKSHOP SAFETY

We have expanded our trusted wheel chock range to include our ergonomically designed Workshop Chock. Complementing our range of quality tested mining products, this chock is purpose designed for the workshop environment.

- » **REDUCES RISK OF BACK STRAIN CAUSED BY REPEAT BENDING**
- » **EASIER TO ENSURE CORRECT POSITIONING**
- » **ELIMINATE THE NEED TO GO UNDER THE FOOTPRINT OF THE TRUCK**
- » **IDEAL FOR TYPICAL WORKSHOP ENVIRONMENTS AND LOW GRADIENTS**



AWARD-WINNING PRODUCT
Innovation & People's Choice Award
QLD Mining Health & Safety Conference

WORKSHOP WHEEL CHOCK

PART NO. NPR07999-00



SIZE 4 WORKSHOP WHEEL CHOCK

PART NO. NPR08304-00
Designed to suit equipment with smaller tyre widths (Graders and small trucks)



WORKSHOP CHOCK

USER GUIDE

National Plastics & Rubber promotes safe working practices therefore, performing your own risk assessment is essential before using these products.



To move into position, pull the handle down, levering the chock onto its back wheels.

Push chock as close to the truck wheel as possible.



Lift the chock onto its front wheel and bring close to the tyre. Bring the back of the chock around into position.

The chock should be straight and flush against the bottom of the tyre.

Ensure both sides of the wheel are chocked.



When chocks on both sides of the wheel are in position correctly, the truck is secured.

To remove the chock, lift onto front wheel, remove from flush position & when clear of the tyre, transition onto the back wheels and move into selected location.

DOZER MAINTENANCE MAT

Our Maintenance Mats provide safe, non-slip access to Dozer cabins. They are quickly and easily fitted to machines in the workshop or in the field.

1 PIECE MAT

720MM WIDE

PART NO. NPR00759-00

 1965mm L

To Suit Track Widths:

720mm W

610mm (24") to 710mm (28")

 16kg

860MM WIDE

PART NO. NPR02122-00

 1200mm L

To Suit Track Widths:

860mm W

710mm (28") to 810mm (32")

 15kg

860MM WIDE

PART NO. NPR00765-00

 1965mm L

To Suit Track Widths:

860mm W

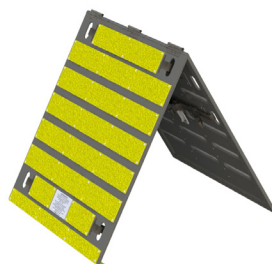
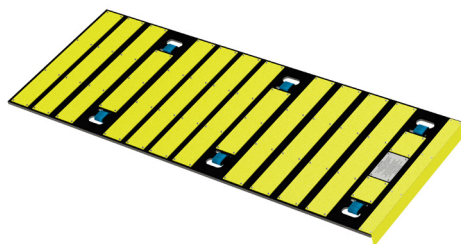
710mm (28") to 810mm (32")

 22kg

» SAFE, NON-SLIP PLATFORM

» QUICK & EASY TO FIT

» MULTIPLE SIZE OPTIONS AVAILABLE



2 PIECE MAT

720MM WIDE

PART NO. NPR00924-00

 2000mm L

To Suit Track Widths:

720mm W

610mm (24") to 710mm (28")

 16kg

860MM WIDE

PART NO. NPR00925-00

 2000mm L

To Suit Track Widths:

860mm W

710mm (28") to 810mm (34")

 22kg

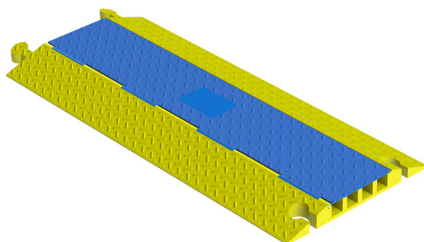
LIGHT DUTY CABLE & HOSE COVERS

Durable Crossover Pads to protect cables & hoses and allow safer pedestrian movement.

HINGED LID

PART NO. NPR01089-00

The hinged lid option provides easy access to cables and is suitable for use in workshops.



	1200mm L
	525mm W
	55mm D
	21kg

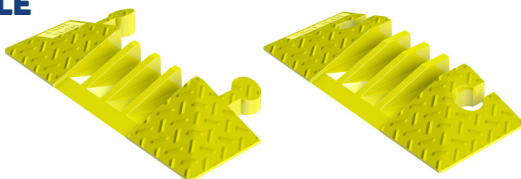
4 Cavities

40mm x 40mm each

MALE & FEMALE END CAP

MALE NPR01091-00

FEMALE NPR01092-00



	5kg
---	-----

LIGHT DUTY CROSSOVER

PART NO. NPR00699-00



	1200mm L
	600mm W
	50mm D
	17.5kg

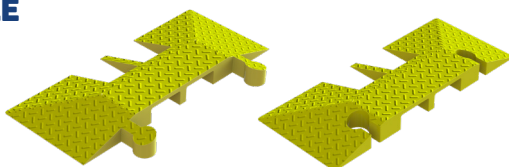
2 Cavities

90mm x 38mm each

MALE & FEMALE END CAP

MALE NPR00713-00

FEMALE NPR00714-00



	4kg
---	-----

MEDIUM DUTY CABLE & HOSE COVERS

Durable Crossover Pads to protect cables & hoses from impact damage by light vehicles and pedestrians.

- » **PROTECTS CABLES FROM PEDESTRIANS & LIGHT VEHICLES**
- » **PROTECT CABLES UP TO $\varnothing 40\text{mm}$**



MEDIUM DUTY CROSSOVER

PART NO. NPR00716-00

2 Cavities

90mm x 38mm each

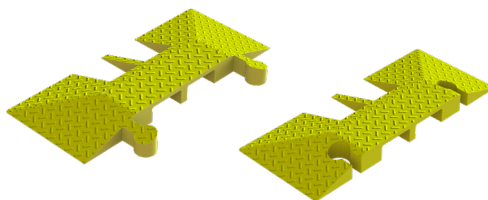


	1200mm L
	600mm W
	50mm D
	23.5kg

MALE & FEMALE END CAP

MALE NPR00713-00

FEMALE NPR00714-00



 4kg

HEAVY DUTY CABLE & HOSE COVERS

THE TRUSTED SOLUTION.

Manufactured from highly durable, tough & corrosion-resistant Polyurethane, NPR's Heavy-duty Dragline Cable Crossover protects large electrical cables with an outside diameter up to 120mm.

- » **PROTECTS LARGE DIAMETER CABLES**
- » **TOUGH, FLEXIBLE AND CORROSION RESISTANT**
- » **SUITS TRUCKS TO 630 TON GVM**
- » **MAINTENANCE FREE**
- » **PRODUCED IN BRIGHT ORANGE FOR IMPROVED VISIBILITY**



Available as the following or contact us for other options and product details.

COMPLETE 2 METRE ASSEMBLY

PART NO. NPR01628-00

 2000 x 2000 x 200mm

COMPLETE 4 METRE ASSEMBLY

PART NO. NPR01630-00

 4000 x 2000 x 200mm

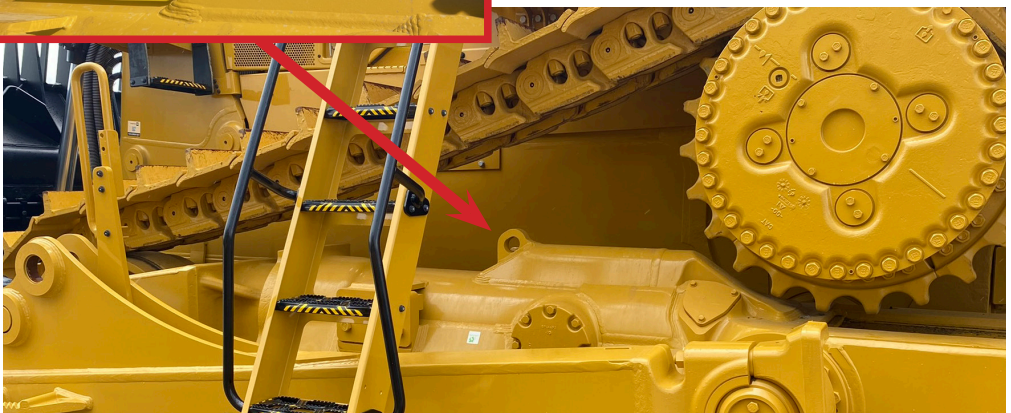
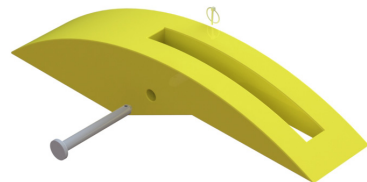
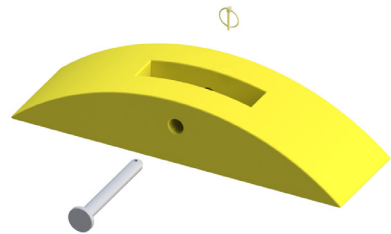
TRACK GUIDE PAD

Reduce machine downtime with our Track Guide Pads.

- » **ASSISTS IN REDUCTION OF SNAGGING INCIDENTS DURING INSTALLATION**
- » **OUR COVER FITS OVER THE LUG, ELIMINATING THE CATCH POINT**
- » **REDUCE MACHINE DOWNTIME**

To suit CAT D10 Dozer
PART NO. NPR06004-00

To suit CAT D11 Dozer
PART NO. NPR07823-00





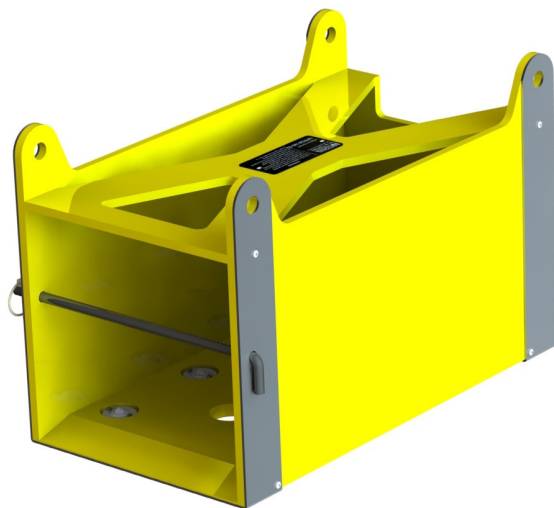
BATTERY CRADLE

Reduce the risk of injury from a manual handling process and save time when moving batteries around onsite.

- » **SUITABLE FOR 60KG N200 BATTERY**
- » **ASSISTS IN MOVING BATTERIES ON SITE**
- » **REDUCE INJURY RISKS FROM MANUAL HANDLING**

NPR08198-00

	570mm L
	315mm W
	370mm H
	11.14kg

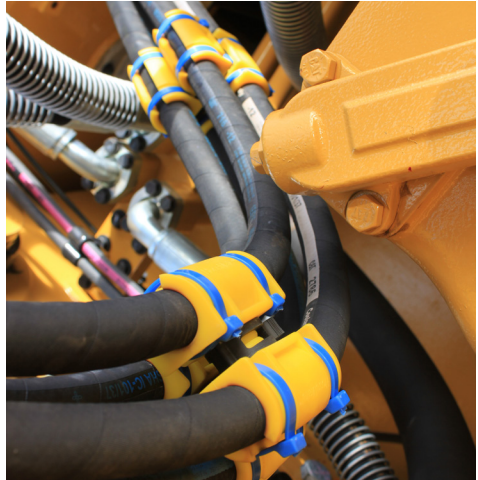


- » **TESTED TO AS1170.0, AS1170.1 AND AS1554.6**
- » **WORKING LOAD LIMIT 6.5KPA OR 100KG, WHICHEVER IS LESS**
- » **FITTED WITH 4 STEEL LIFTING EYES**
- » **BALL TRANSFER UNITS ON THE BASE**
- » **LOCKING PIN ACROSS FRONT ENTRY**



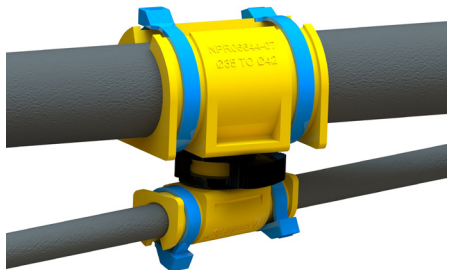
INCREASING THE SERVICE LIFE OF HYDRAULIC HOSES

- » Increase machine availability
- » Minimise maintenance and equipment downtime
- » V2 fire rated and UV resistant material
- » Extensivley Tested - heat, cold, chemicals and vibrations



HoseMate™ - a purpose designed polymer product affixed to hydraulic hoses to eliminate external abrasion.

- » Position hydraulic hoses
- » Eliminate hose-on-hose abrasion
- » Prevent hydraulic hose failures



**HOW MUCH DO HOSE FAILURES
CONTRIBUTE TO YOUR
PRODUCTIVITY LOSS?**

Patent Pending

AWARD-WINNING PRODUCT
Highly Commended - Innovation category
QLD Mining Health & Safety Conference 2023



For more information visit [HOSEMATE.COM.AU](https://www.hosemate.com.au)

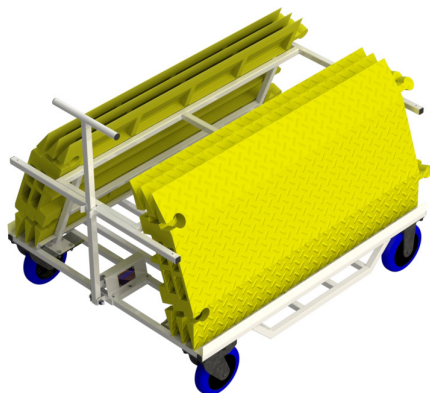
WORKSHOP TROLLEY RANGE

CABLE CROSSOVER TROLLEY

PART NO. NPR02373-00

Holds up to 6 Cable Crossovers

* Cable Crossovers not included



SUITS:

- » NPR00699-00
- » NPR00716-00
- » NPR01089-00

DOZER MAINTENANCE MAT TROLLEY

PART NO. NPR02374-00

Holds up to 4 Mats

*Mats not included



SUITS:

- » NPR00759-00
- » NPR00765-00

TRAY SUPPORT BLOCKS

TAKE THE GUESS WORK OUT OF SUPPORTING TRAYS

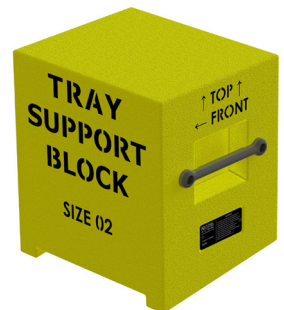
- » IMPROVE YOUR WORKPLACE SAFETY
- » INCREASE YOUR WORKERS CONFIDENCE
- » REDUCE SERVICE TIME - SAVE \$\$\$

IDEAL FOR:

- » PROVIDING SAFE ACCESS UNDER TRAY
- » PROVIDING FLAT TRAY WORK SURFACE
- » ALLOWING MULTIPLE MAINTENANCE TASKS SIMULTANEOUSLY
- » HOISTING CYLINDER CHANGE OUTS

OUR SUPPORT BLOCK IS:

- » LOAD RATED
- » BUILT FOR PURPOSE
- » LIGHTWEIGHT
- » SUITABLE FOR MOST TRUCKS



TRAY SUPPORT BLOCKS - TO SUIT MINE TRUCKS

Make	Series	Tray Support Block	Weight	Product Number
Caterpillar	793	Size 1	18.5kg	NPR06253-00
Caterpillar	789	Size 1	18.5kg	NPR06253-00
Caterpillar	785	Size 1	18.5kg	NPR06253-00
Caterpillar	777	Size 1	18.5kg	NPR06253-00
Caterpillar	793	Size 2	23.5kg	NPR05233-00
Komatsu	730E	Size 1	18.5kg	NPR06253-00
Komatsu	830E	Size 2	23.5kg	NPR05233-00
Komatsu	930E	Size 2	23.5kg	NPR05233-00
Terex	MT4400	Size 3	21.5kg	NPR06358-00
Liebherr	T282C	Size 3	21.5kg	NPR06358-00
Caterpillar	795	Size 5	20kg	NPR07087-00
Caterpillar	797	Size 7	20.5kg	NPR07678-00
Caterpillar	789	Size 9 (truck specific)	16kg	NPR08172-00
Caterpillar	796	Size 10	29kg	NPR08264-00
Hitachi	EH5000	Size 11	23kg	NPR08270-00

National Plastics & Rubber promotes safe working practices.
Ask us how to check your truck & tray dimensions to find the most suitable
tray support block

LIGHTWEIGHT RIM CLEATS

Reduce OH&S risks that may arise from the weight and awkwardness of replacing steel cleats overhead with our Lightweight Rim Cleats.

1. Make sure truck is stationary and secure

2. Secure the rim to the truck with 3 evenly spaced lightweight cleats (12, 3, and 9 o'clock) and a steel cleat at 6 o'clock



**AWARD-WINNING
PRODUCT**

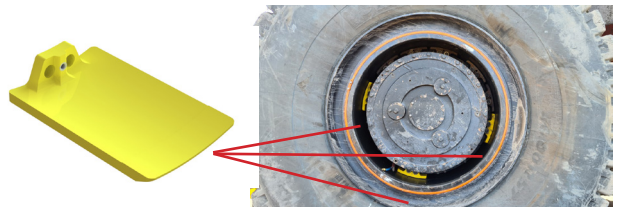
Austmine Innovation
METS Award
QLD Mining & Engineering
Exhibition 2022

3. Tension the remaining nuts to the specified torque - engraved on the face of the lightweight cleat

4. Remove the tyre handler

5. Two tyre fitters should work together to fit steel cleats to approximately 5 and 7 o'clock on the tyre

Lightweight cleats weigh approx **6kg!**



Steel cleats are heavy and unsafe to lift over head



Steel cleats can weigh
27.9kg!

6. Ensure the whole axle is jacked up - start the truck and rotate the rims

7. Progressively install more steel cleats as the tyre is rotated - remove the lightweight cleats and replace with steel

8. Ensure *ALL* lightweight cleats are removed before moving vehicle

Suits EH range of Hitachi trucks

Contact NPR for more details and part nos.

LOUVERED VENT

To protect trucks from damaging traditional steel vents when reversing, install an impact resistant Rear Diff Vent or Louvered Vent.

- » **IMPACT RESISTANT**
- » **FLEXIBLE & DURABLE DESIGN**
- » **LIGHTWEIGHT**
- » **COST EFFECTIVE**
- » **NON CORROSIVE**



LOUVERED VENT

PART NO. NPR06069-00 (LONG KIT)

PART NO. NPR05448-00 (SHORT KIT)

Individual Components

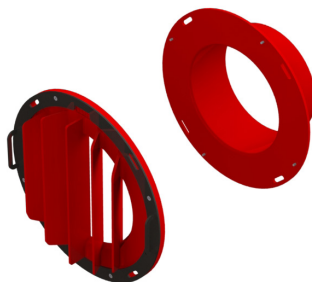
Louvered Vent & Retaining Ring **NPR02077-00**

Vent Tube Long **NPR06069-10**

Vent Tube Short **NPR02206-00**

To Suit

Komatsu 930E Rear Axle Exhaust Housing



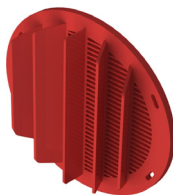
 16kg

REAR DIFF VENT

PART NO. NPR02395-00

To Suit

Caterpillar 795 Rear Axle Exhaust Housing



 6.4kg

CLAMP RING

PART NO. NPR005891-00

To suit NPR02395-00



 3kg

MATTCAP

Reduce manual handling of heavy steel hub caps and replace it with lightweight, non-corrosive Mattcaps.

Mattcaps also make checking your oil easier with 3 sight glasses.

- » **75% LIGHTER THAN THE STEEL ALTERNATIVE**
- » **FLEXIBLE BUT HOLDS ITS SHAPE**
- » **IMPACT RESISTANT**
- » **NON-CORROSIVE**
- » **EASY TO VIEW OIL LEVELS**



MATTCAP TO SUIT KOMATSU 730E & 830E

PART NO. NPR06035-00



AWARD-WINNING PRODUCT

Rio Tinto Making a
Difference Award &
Minerals Recognition
Award (2017)



Kit Includes

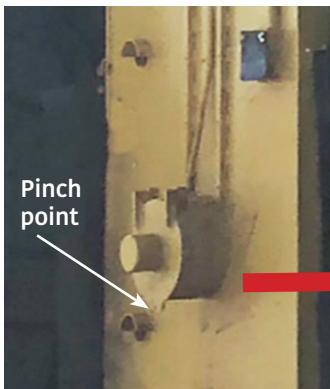
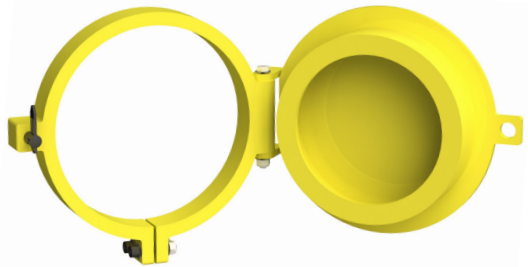
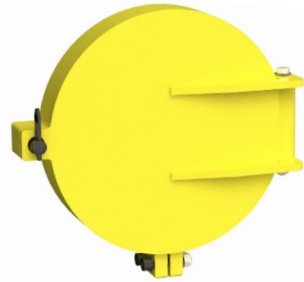
- 1 x Cap
- 3 x Sight Glasses
- 1 x Magnetic Plug
- 1 x Valve
- 1 x O Ring

FUEL CAP

Replace metal fuel caps with NPR's newly-designed lightweight Fuel Cap.

Sitting over the fuel fill nozzle, the Cap reduces occupational risks associated with a heavy metal fuel door hinging open from the top.

- » **LIGHTWEIGHT - 7KG**
- » **HINGES OPEN HORIZONTALLY**
- » **WORKS WITH GRAVITY TO MINIMISE PINCH POINT RISKS**
- » **EASY TO REPLACE - NO WELDING REQUIRED**
- » **REDUCE WORKPLACE INJURIES**



PART NO. NPR08192-00

Currently suitable for
Komatsu 830 mine
trucks

Contact NPR for more
information.

FLEXIFLAP™

Flexiflap™ Mudflap material is a strong and durable solution that is lightweight compared to conventional materials and is PVC coated to resist mud hang up.

- » **CONTAINS CROSS WOVEN REINFORCING FABRIC**
- » **PVC COATED**
- » **IMPACT & FIRE RESISTANT**
- » **WILL NOT DELAMINATE**
- » **LIGHTWEIGHT - 9KG PER SQ/ MTR**
- » **MUDFLAPS CAN BE MADE TO ORDER, INCLUDING PRE-DRILLED BOLT HOLES**



1830mm WIDE - PER LINEAL METRE

PART NO. NPR00603-00

7mm thick

1830mm WIDE - 30 METRE ROLL

PART NO. NPR00602-00

7mm thick

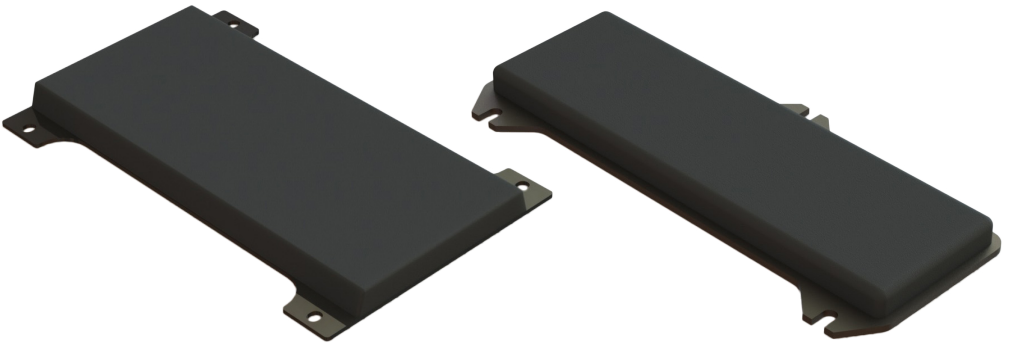
1200mm WIDE - 30 METRE ROLL

PART NO. NPR01097-00

7mm thick

BODY PADS

- » **HIGH QUALITY BODY PADS AVAILABLE TO SUIT:**
 - » **CATERPILLAR**
 - » **HITACHI**
 - » **KOMATSU**
 - » **TEREX**
- » **TESTED AND PROVEN TO BE EQUIVALENT TO OEM PARTS**
- » **NO MODIFICATION REQUIRED**
- » **MADE IN AUSTRALIA**
- » **PREMIUM GRADE RUBBER BONDED TO STEEL PLATES**



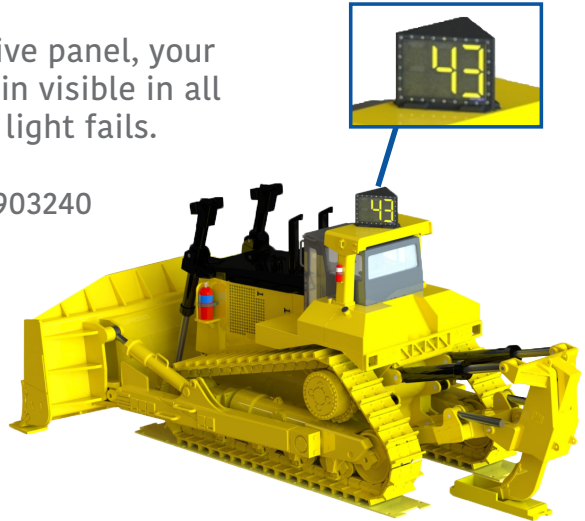
NEVAFAIL™ LED I.D.

With quality componentry and versatile numbers designed to suit your application, Nevafail™ is the only reliable choice for machine identification.

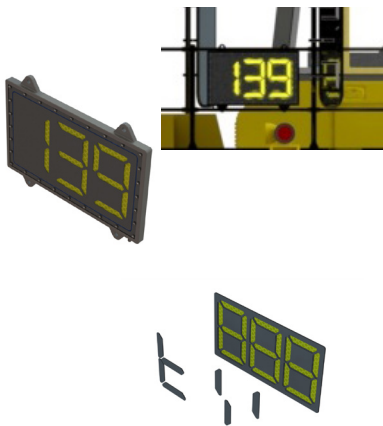
Featuring a fail-safe reflective panel, your machine numbers will remain visible in all conditions - even if the LED light fails.

Patent Application No. 2019903240

- » **LIGHTWEIGHT**
- » **IMPACT RESISTANT**
- » **WATER, DUST & OIL RESISTANT**



- » **HIGHLY VISIBLE LED LIGHT**
- » **FAIL SAFE REFLECTIVE PANEL**



NEVAFAIL™ LED I.D.

WITH A RANGE OF OPTIONS, NEVAFAIL™ LED I.D. PANEL CAN BE DESIGNED TO SUIT ANY APPLICATION AND MACHINE:

PART NO.	FLAT	TRIANGULAR	12V	24V	MAGNETIC	BOLT ON	INTERCHANGEABLE	CUSTOMISABLE
NPR08154-00	✓		✓			✓	✓	
NPR08155-00	✓		✓			✓		✓
NPR06709-00	✓			✓		✓	✓	
NPR07147-00	✓			✓		✓		✓
NPR08157-00		✓	✓		✓		✓	
NPR08158-00		✓	✓		✓			✓
NPR08159-00		✓	✓			✓	✓	
NPR08160-00		✓	✓			✓		✓
NPR07480-00		✓		✓	✓		✓	
NPR07169-00		✓		✓	✓			✓
NPR07481-00		✓		✓		✓	✓	
NPR07295-00		✓		✓		✓		✓

INTERCHANGEABLE - 3 DIGITS ONLY

CUSTOMISABLE - NON-DIGITAL NUMBERS CUT TO CUSTOMER REQUIREMENTS

MORE OPTIONS AVAILABLE - CONTACT NPR TO DISCUSS YOUR MACHINE ID REQUIREMENTS

ROOFTOP MACHINE I.D.

Machine Identification Number Boxes easily attach to machine rooftops and use reflective digits for optimum visibility.

- » **EASY TO ATTACH**
- » **REFLECTIVE DIGITS FOR OPTIMUM VISIBILITY**
- » **RANGE OF OPTIONS**



TRIANGULAR BOX

PART NO. NPR01677-00

Rooftop Box only.



500mm W

500mm H

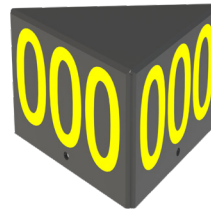
PART NO. NPR01606-00

Rooftop Box only.



500mm W

325mm H



TRIANGULAR BOX & FRAME ASSEMBLY

PART NO. NPR01667-00

Complete with isolation bushes and fasteners.



500mm W

500mm H

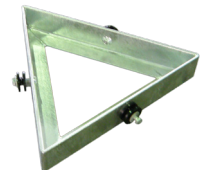
PART NO. NPR01604-00

Complete with isolation bushes and fasteners.



500mm W

325mm H



ROOFTOP MACHINE I.D.

TRIANGULAR BOX - MAGNETIC ASSEMBLY

PART NO. NPR07658-00

Complete with
Galvanised Steel
Mounting Frame,
Isolation Bushes and
Magnetic Anchors

 500mm W
500mm H



PART NO. NPR06120-00

Complete with
Galvanised Steel
Mounting Frame,
Isolation Bushes and
Magnetic Anchors

 500mm W
325mm H




TRIANGULAR BOX - BMA SPEC

Designed to BMA site requirements

PART NO. NPR07603-00

Complete with Magnets -
no steel frame
Digits are 400mm high

 875mm W
600mm H



HANGING MACHINE I.D.

Made from durable Polyurethane, Hanging Machine Identification Number Plates come complete with stainless steel mounting bar.

- » **TOUGH & DURABLE
POLYURETHANE**
- » **STAINLESS STEEL MOUNTING
BAR**



BLUE - 600mm LONG ID

PART NO. NPR01394-00

	600mm L
	510mm W
	16mm Thick

BLUE - 1200mm LONG ID

PART NO. NPR00816-00

	1200mm L
	1020mm W
	25mm Thick

YELLOW - 600mm LONG ID

PART NO. NPR01487-00

	600mm L
	510mm W
	16mm Thick

YELLOW - 1200mm LONG ID

PART NO. NPR01486-00

	1200mm L
	1020mm W
	25mm Thick

YELLOW - 1150mm LONG ID

PART NO. NPR02143-00

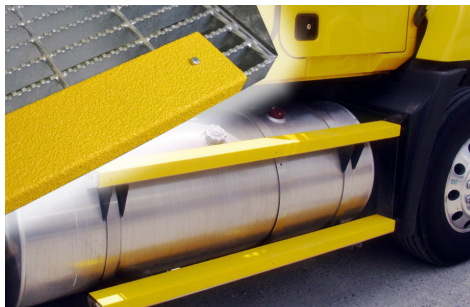
Number panel only - no mounting bar.

	1150mm L
	400mm W
	25mm Thick

SLIP RESISTANT STEP NOSING

National Plastics & Rubber can supply heavy duty, Slip Resistant Step Nosing for applications ranging from the office, to airports, mine sites and offshore oil rigs.

- » **HEAVY DUTY COARSE GRAIN FOR MAXIMUM GRIP**
- » **KITS CAN BE MADE FOR ANY MACHINE OR APPLICATION**



KITS AVAILABLE FOR:

CAT 789C

PART NO. NPR07258-00

CAT 793

PART NO. NPR01509-00

CAT 777

PART NO. NPR01868-00

CAT 797

PART NO. NPR01511-00

CAT D10 & D11 DOZER

PART NO. NPR01512-00

KOMATSU 830E

PART NO. NPR07356-00

KRESS TRUCK 200 C11 (FRONT)

PART NO. NPR02244-00

KRESS TRUCK 200 C11 (REAR)

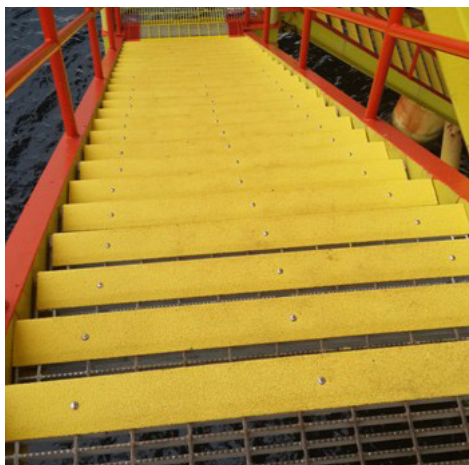
PART NO. NPR02245-00

TEREX BLAST DRILL

PART NO. NPR01775-00

Standard nosing is made using 1.6mm galvanized steel, 50mm tread and a 20mm rise. Nosing comes pre-drilled and supplied with fasteners. Other options are available on request.

- » **PRE-DRILLED & SUPPLIED WITH FASTENERS**



DOOR LATCH COVERS

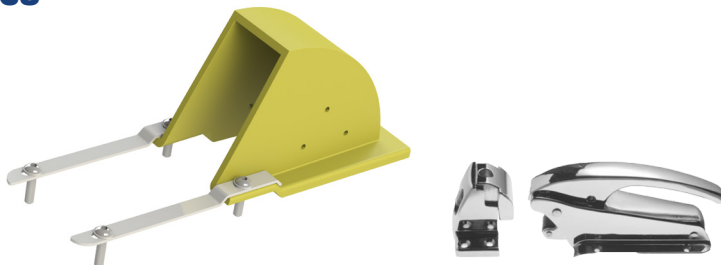
Door Latch Covers provide operators protection against injury to their fingers and hands when operating machine door handles.

- » **PREVENTS WORKPLACE INJURY**
- » **ALLOWS HANDLE TO OPERATE AS PER NORMAL WHILE PROTECTING YOUR FINGERS OR HAND FROM BEING CAUGHT**



TO SUIT AH-838

PART NO. NPR01715-00



TO SUIT CT-1178

PART NO. NPR02251-00



EMERGENCY STOP SWITCH COVERS

Emergency Stop Switch Covers protect and prolong the life of the switch.

- » **INCREASE LIFE OF THE SWITCH**
- » **IMPROVES SAFETY**
- » **REDUCES MAINTENANCE COSTS**
- » **PREVENTS DUST & MOISTURE PENETRATION**



TO SUIT SCHNEIDER XALK174

PART NO. NPR01822-00

TO SUIT SCHNEIDER XAPM1316H29

PART NO. NPR02053-00



STUD PROTECTORS

- » PROTECTS VEHICLE STUDS DURING TRANSPORT & STORAGE
- » RANGE OF SIZES AVAILABLE
- » SUITABLE FOR CATERPILLAR & KRESS MINING TRUCKS



TO SUIT CATERPILLAR 793

PART NO. NPR07014-00 (YELLOW)

TO SUIT CATERPILLAR 785, 789 & KRESS VEHICLES

PART NO. NPR06551-00 (ORANGE)

TO SUIT KRESS VEHICLES

PART NO. NPR06634-00 (BLUE)

TO SUIT CATERPILLAR 773 & 777

PART NO. NPR06635-00 (GREEN)

TO SUIT CATERPILLAR 795 & 797

PART NO. NPR06641-00 (YELLOW)

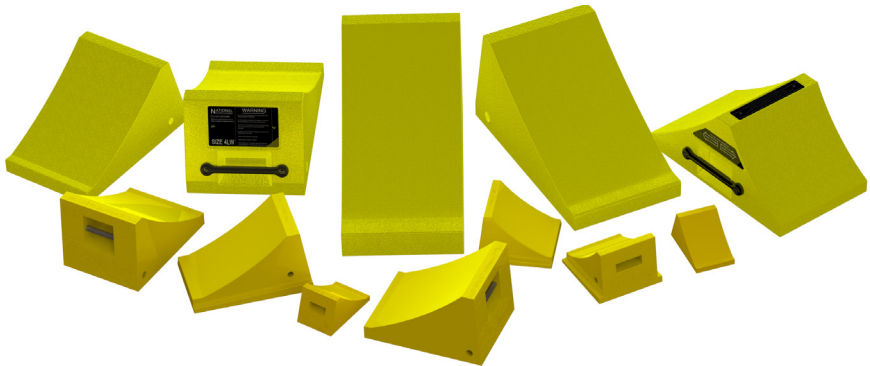
Minimum order quantity of 2000

WHEEL CHOCKS

WORLD CLASS CHOCKS.

National Plastics & Rubber Wheel Chocks are tough and durable with sizes to cover almost every application from your family car to the largest mining trucks.

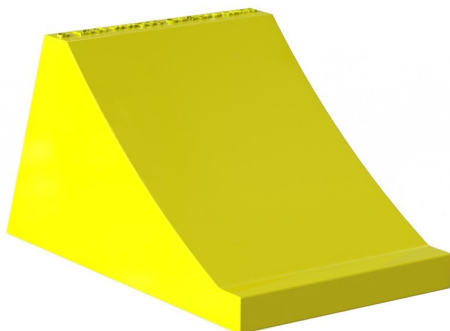
- » **LIGHTWEIGHT**
- » **FIELD TESTED**
- » **SLIP-RESISTANT, DURABLE POLYURETHANE**
- » **ONE-PIECE CONSTRUCTION**
- » **IMPERVIOUS TO CHEMICALS, SALTS, ROT**
- » **RESISTANT TO FUEL, OIL & SOLVENTS**
- » **WIDE RANGE OF SIZES TO SUIT EVERY APPLICATION**



LIGHT VEHICLES

SIZE 1.5LW

PART NO. NPR01895-00

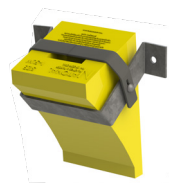


Suits Tyres

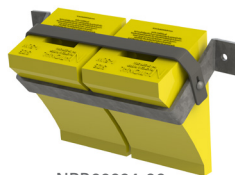
Ø 400mm to 800mm



BRACKET OPTIONS



NPR01945-00



NPR02034-00

180mm L

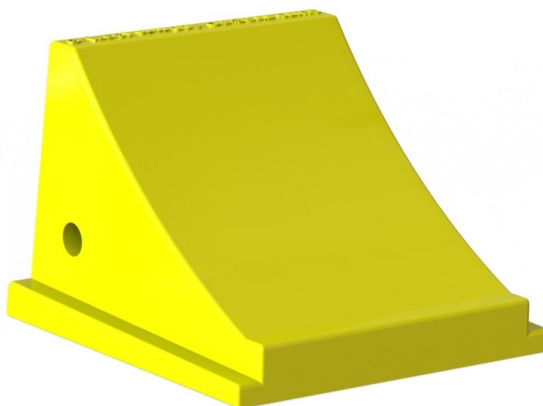
115mm W

110mm H

0.7kg

SIZE 2LW

PART NO. NPR01180-00

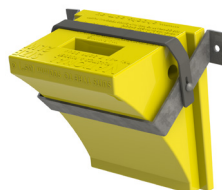


Suits Tyres

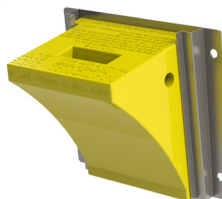
Ø 400mm to 900mm



BRACKET OPTIONS



NPR01951-00



NPR01236-00

210mm L

200mm W

150mm H

1.6kg

MEDIUM VEHICLES

SIZE 3LW

PART NO. NPR01181-00



Suits Tyres

900mm to 1400mm



BRACKET OPTIONS



NPR02013-00



NPR01237-00

340mm L

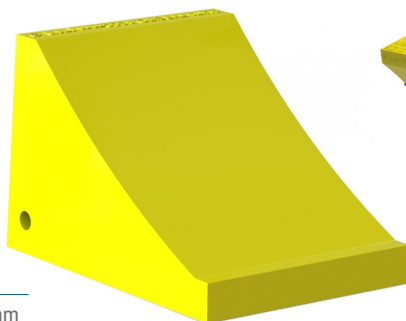
220mm W

200mm H

3.5kg

SIZE 3.5LW

PART NO. NPR02097-00



Suits Tyres

1200mm to 1800mm



BRACKET OPTION



NPR02266-00



NPR02264-00

340mm L

250mm W

225mm H

6.2kg

SIZE 3.7LW

PART NO. NPR01891-00



Suits Tyres

1200mm to 2200mm



BRACKET OPTION



NPR01944-00

475mm L

305mm W

255mm H

6kg

LARGE - X LARGE VEHICLES

SIZE 4LW

PART NO. NPR01329-00



Suits Tyres

1800mm to 3000mm



BRACKET OPTION



NPR02016-00

570mm L

340mm W

280mm H

9kg

SIZE 5LW

PART NO. NPR02155-00



Suits Tyres

2200mm to 3500mm



BRACKET OPTION



NPR02136-00

621mm L

343mm W

323mm H

11kg

SIZE 6LW

PART NO. NPR00984-00



Suits Tyres

2800mm to 4200mm



BRACKET OPTION



NPR02017-00

680mm L

337mm W

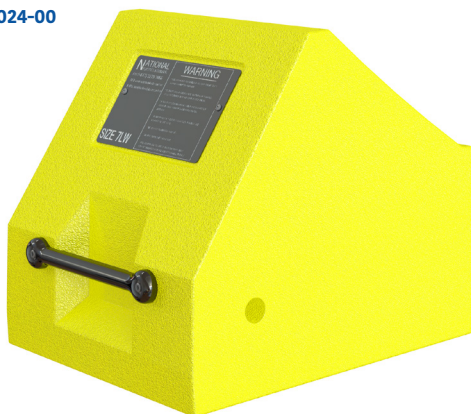
355mm H

14kg

XX LARGE VEHICLES

SIZE 7LW

PART NO. NPR05024-00



Suits Tyres

Ø 2800mm to 4500mm



BRACKET OPTION



445mm L

385mm W

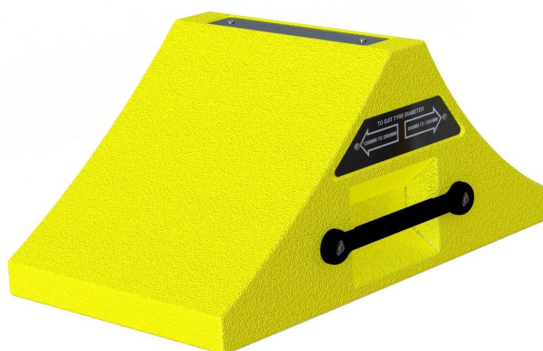
400mm H

16kg

MEDIUM - LARGE VEHICLES

SIZE 4/3LW

PART NO. NPR01476-00



Suits Tyres

Ø 800mm to 2800mm



BRACKET OPTION



559mm L

330mm W

280mm H

8kg

GENERAL PURPOSE CHOCKS



DOUBLE SIDED CHOCK W/ HANDLE

PART NO. NPR01823-00

Suits Tyres

400mm to 800mm



670mm L

200mm W

90mm H

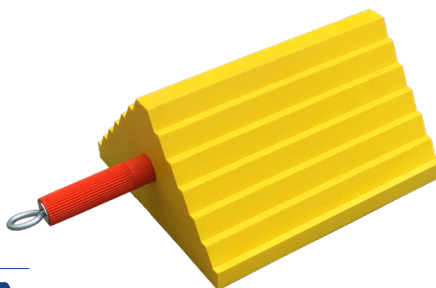
4kg

WHEEL CHOCK TRIANGULAR

PART NO. NPR05349-00

Suits Tyres

Up to 1050mm



254mm L

216mm W

127mm H

2kg

Make	Series	Tyre Size	Width (MM)	Diameter (MM)	Wheel Chock	Product Number
Caterpillar	797	59/80R63	1467	4017	Size 6 LW	NPR00984-00
Caterpillar	797	59/80R63	1467	4017	Size 7 LW	NPR05024-00
Caterpillar	793C	40.00R51	1108	3575	Size 6 LW	NPR00984-00
Caterpillar	789	37.00R57	1043	3442	Size 6 LW	NPR00984-00
Caterpillar	789	37.00R57	1043	3442	Size 5 LW	NPR02155-00
Caterpillar	785	33.00R51	932	3061	Size 4 LW	NPR01329-00
Caterpillar	785	33.00R51	932	3061	Size 5 LW	NPR02155-00
Caterpillar	777	27.00R49	750	2708	Size 4 LW	NPR01329-00
Caterpillar	777	27.00R49	750	2708	Size 5 LW	NPR02155-00
Caterpillar	775	24.00R35	660	2194	Size 4 LW	NPR01329-00
Caterpillar	773	21.00R35	577	2048	Size 3.7 LW	NPR01891-00
Caterpillar	769	18.00R33	515	1890	Size 3.7 LW	NPR01891-00
Caterpillar	740	29.5-R25	850	1865	Size 3.7 LW	NPR01891-00
Hitachi	EH5000	53/80R63	1304	3828	Size 6 LW	NPR00984-00
Hitachi	EH5000	53/80R63	1304	3828	Size 7 LW	NPR05024-00
Hitachi	EH4500	50/90R57	1283	3840	Size 6 LW	NPR00984-00
Hitachi	EH4000	46/90R57	1199	3576	Size 6 LW	NPR00984-00
Hitachi	EH3500	37.00R57	1044	3422	Size 5 LW	NPR02155-00
Hitachi	AH250	23.5R25	600	1613	Size 3.7 LW	NPR01891-00
Hitachi	AH300	23.5R25	600	1613	Size 3.7 LW	NPR01891-00
Hitachi	AH400	29.5R25	756	1958	Size 3.7 LW	NPR01891-00
Komatsu	930	53/80R63	1304	3828	Size 6 LW	NPR00984-00
Komatsu	930	53/80R63	1304	3828	Size 7 LW	NPR05024-00
Komatsu	830E	40.00R57	1127	3575	Size 6 LW	NPR00984-00
Komatsu	730E	37.00-R57	1044	3422	Size 6 LW	NPR00984-00
Komatsu	730E	37.00-R57	1044	3422	Size 5 LW	NPR02155-00
Komatsu	630E	36.00R51	1015	3204	Size 5 LW	NPR02155-00
Komatsu	785	27.00-R49	750	2692	Size 4 LW	NPR01329-00
Komatsu	HD465	24.00R35	660	2194	Size 4 LW	NPR01329-00
Komatsu	HD405	18.00R33	515	1890	Size 3.7 LW	NPR01891-00
Liebherr	T282	56/80R63 or 59/80R83	1467	4017	Size 6 LW	NPR00984-00
Terex	MT4400	40.00R57	1127	3575	Size 6 LW	NPR00984-00
Terex	TR60	24.00R35	660	2180	Size 4 LW	NPR01329-00
Volvo	A40F	29.5R25	756	1958	Size 3.7 LW	NPR01891-00
Volvo	A25F	25.5R25	673	1736	Size 3.7 LW	NPR01891-00
Volvo	A30F	750/65R25	738	1599	Size 3.7 LW	NPR01891-00

PRODUCTS YOU CAN RELY ON!

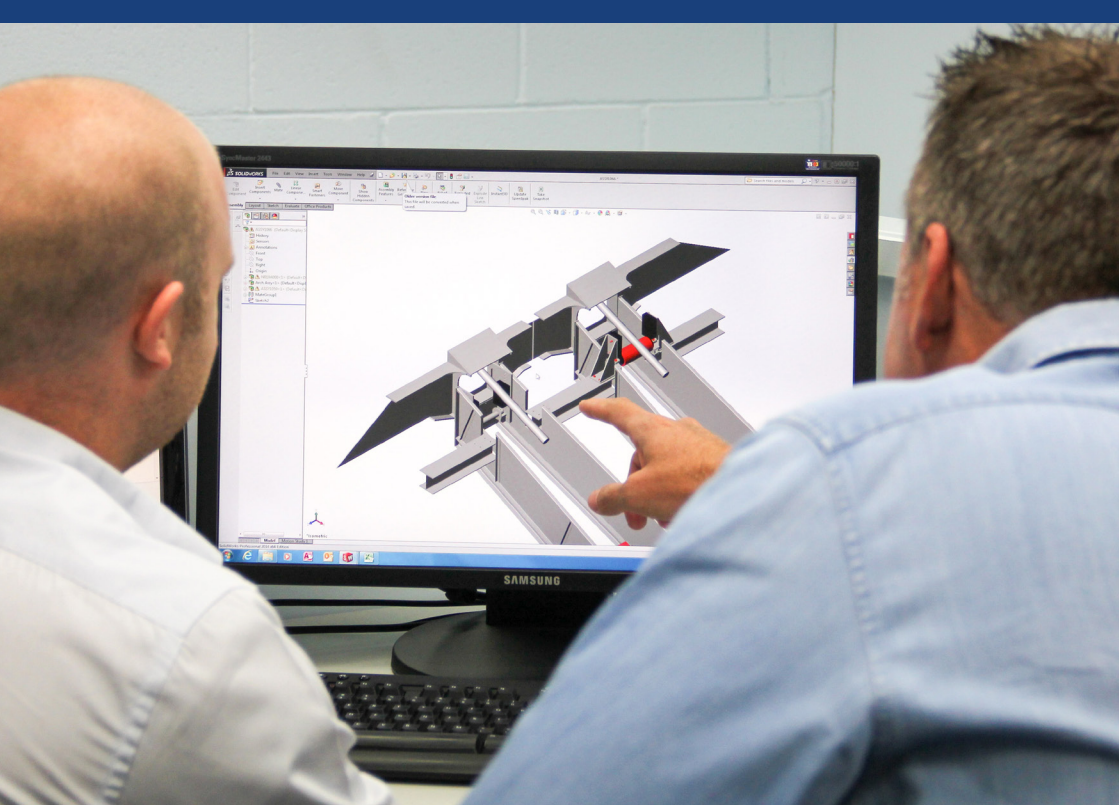


ALL OUR PRODUCTS UNDERGO EXTENSIVE FIELD TESTING.

National Plastics & Rubber's commitment to our customers is to be the Best Industry Provider of polyurethane products to the global marketplace. Therefore, quality and reliability of our products is the concern and responsibility of every person in our organization.

As proof of our commitment to quality and to ensure our customers can depend on NPR products we conduct extensive field testing of all our products.

Our testing procedures push the limits far beyond what the customer will ever require from our products. Knowing our products can stand up to the harshest abuse lets us know you'll be able to rely on them.



WE CREATE SOLUTIONS

CAN'T FIND WHAT YOU NEED?

From design to manufacturing, National Plastics & Rubber offer custom made products to meet your individual needs. Our quality polyurethane, rubber and industrial plastic products can be used as a solution to many of your workplace requirements from floor protection to heavy machinery replacement parts.



NATIONAL

PLASTICS & RUBBER

NATIONALPLASTICS.NET.AU

Email info@nationalplastics.net.au **Phone** +617 3279 3066

National Plastics & Rubber has the experience and knowledge necessary to meet your needs.

National Plastics & Rubber promotes safe working practices therefore, performing your own risk assessment is essential before using these products.

We specialise in polyurethane, rubber and industrial plastics design and manufacturing for the mining, automotive and manufacturing industries.